

Flute

Essential Major Scales

Concert D Flat Major



Musical notation for the Concert D Flat Major scale, starting on D4 and ending on D5. The scale is written in treble clef with a key signature of three flats (B-flat, E-flat, A-flat) and a common time signature. The notes are: D4, E4, F4, G4, A4, B-flat4, C5, D5. The scale is presented as an ascending and descending sequence with a slur over the entire line.

Concert A Flat Major



Musical notation for the Concert A Flat Major scale, starting on A3 and ending on A4. The scale is written in treble clef with a key signature of three flats (B-flat, E-flat, A-flat) and a common time signature. The notes are: A3, B-flat3, C4, D4, E-flat4, F4, G4, A4. The scale is presented as an ascending and descending sequence with a slur over the entire line.

Concert E Flat Major



Musical notation for the Concert E Flat Major scale, starting on E3 and ending on E4. The scale is written in treble clef with a key signature of three flats (B-flat, E-flat, A-flat) and a common time signature. The notes are: E3, F4, G4, A4, B-flat4, C5, D5, E4. The scale is presented as an ascending and descending sequence with a slur over the entire line.

Concert D Major



Musical notation for the Concert D Major scale, starting on D4 and ending on D5. The scale is written in treble clef with a key signature of two sharps (F-sharp, C-sharp) and a common time signature. The notes are: D4, E4, F-sharp4, G4, A4, B4, C5, D5. The scale is presented as an ascending and descending sequence with a slur over the entire line.

Concert A Major



Musical notation for the Concert A Major scale, starting on A3 and ending on A4. The scale is written in treble clef with a key signature of three sharps (F-sharp, C-sharp, G-sharp) and a common time signature. The notes are: A3, B4, C5, D5, E4, F-sharp4, G-sharp4, A4. The scale is presented as an ascending and descending sequence with a slur over the entire line.

Concert E Major



Musical notation for the Concert E Major scale, starting on E3 and ending on E4. The scale is written in treble clef with a key signature of four sharps (F-sharp, C-sharp, G-sharp, D-sharp) and a common time signature. The notes are: E3, F-sharp4, G-sharp4, A4, B4, C5, D5, E4. The scale is presented as an ascending and descending sequence with a slur over the entire line.

Concert C Major



Musical notation for the Concert C Major scale, starting on C4 and ending on C5. The scale is written in treble clef with a natural key signature and a common time signature. The notes are: C4, D4, E4, F4, G4, A4, B4, C5. The scale is presented as an ascending and descending sequence with a slur over the entire line.

Concert G Major



Musical notation for the Concert G Major scale, starting on G3 and ending on G4. The scale is written in treble clef with a key signature of one sharp (F-sharp) and a common time signature. The notes are: G3, A3, B4, C5, D5, E4, F-sharp4, G4. The scale is presented as an ascending and descending sequence with a slur over the entire line.

Concert F Major



Musical notation for the Concert F Major scale, starting on F3 and ending on F4. The scale is written in treble clef with a key signature of one flat (B-flat) and a common time signature. The notes are: F3, G3, A3, B4, C5, D5, E4, F4. The scale is presented as an ascending and descending sequence with a slur over the entire line.

Concert B Flat Major



Musical notation for the Concert B Flat Major scale, starting on B2 and ending on B3. The scale is written in treble clef with a key signature of two flats (B-flat, E-flat) and a common time signature. The notes are: B2, C3, D3, E3, F3, G3, A3, B3. The scale is presented as an ascending and descending sequence with a slur over the entire line.

Oboe

Essential Major Scales

Concert D Flat Major



Musical notation for the Concert D Flat Major scale, starting on D4 and ending on D5. The key signature has four flats (Bb, Eb, Ab, Db) and the time signature is common time (C). The scale is written in a single line of music with a treble clef, showing the ascending and descending notes with a slur over the entire scale.

Concert A Flat Major



Musical notation for the Concert A Flat Major scale, starting on A3 and ending on A4. The key signature has three flats (F, Cb, Gb) and the time signature is common time (C). The scale is written in a single line of music with a treble clef, showing the ascending and descending notes with a slur over the entire scale.

Concert E Flat Major



Musical notation for the Concert E Flat Major scale, starting on E3 and ending on E4. The key signature has two flats (Bb, Eb) and the time signature is common time (C). The scale is written in a single line of music with a treble clef, showing the ascending and descending notes with a slur over the entire scale.

Concert D Major



Musical notation for the Concert D Major scale, starting on D4 and ending on D5. The key signature has two sharps (F#, C#) and the time signature is common time (C). The scale is written in a single line of music with a treble clef, showing the ascending and descending notes with a slur over the entire scale.

Concert A Major



Musical notation for the Concert A Major scale, starting on A3 and ending on A4. The key signature has three sharps (F#, C#, G#) and the time signature is common time (C). The scale is written in a single line of music with a treble clef, showing the ascending and descending notes with a slur over the entire scale.

Concert E Major



Musical notation for the Concert E Major scale, starting on E3 and ending on E4. The key signature has four sharps (F#, C#, G#, D#) and the time signature is common time (C). The scale is written in a single line of music with a treble clef, showing the ascending and descending notes with a slur over the entire scale.

Concert C Major



Musical notation for the Concert C Major scale, starting on C4 and ending on C5. The key signature has no sharps or flats and the time signature is common time (C). The scale is written in a single line of music with a treble clef, showing the ascending and descending notes with a slur over the entire scale.

Concert G Major



Musical notation for the Concert G Major scale, starting on G3 and ending on G4. The key signature has one sharp (F#) and the time signature is common time (C). The scale is written in a single line of music with a treble clef, showing the ascending and descending notes with a slur over the entire scale.

Concert F Major



Musical notation for the Concert F Major scale, starting on F3 and ending on F4. The key signature has one flat (Bb) and the time signature is common time (C). The scale is written in a single line of music with a treble clef, showing the ascending and descending notes with a slur over the entire scale.

Concert B Flat Major



Musical notation for the Concert B Flat Major scale, starting on B2 and ending on B3. The key signature has two flats (Bb, Eb) and the time signature is common time (C). The scale is written in a single line of music with a treble clef, showing the ascending and descending notes with a slur over the entire scale.

Bassoon

Essential Major Scales

Concert D Flat Major

Musical notation for the Concert D Flat Major scale in bass clef, common time. The scale is written in a single line with a slur over the ascending line.

Concert A Flat Major

Musical notation for the Concert A Flat Major scale in bass clef, common time. The scale is written in a single line with a slur over the ascending line.

Concert E Flat Major

Musical notation for the Concert E Flat Major scale in bass clef, common time. The scale is written in a single line with a slur over the ascending line.

Concert D Major

Musical notation for the Concert D Major scale in bass clef, common time. The scale is written in a single line with a slur over the ascending line.

Concert A Major

Musical notation for the Concert A Major scale in bass clef, common time. The scale is written in a single line with a slur over the ascending line.

Concert E Major

Musical notation for the Concert E Major scale in bass clef, common time. The scale is written in a single line with a slur over the ascending line.

Concert C Major

Musical notation for the Concert C Major scale in bass clef, common time. The scale is written in a single line with a slur over the ascending line.

Concert G Major

Musical notation for the Concert G Major scale in bass clef, common time. The scale is written in a single line with a slur over the ascending line.

Concert F Major

Musical notation for the Concert F Major scale in bass clef, common time. The scale is written in a single line with a slur over the ascending line.

Concert B Flat Major

Musical notation for the Concert B Flat Major scale in bass clef, common time. The scale is written in a single line with a slur over the ascending line.

Clarinet in Bb

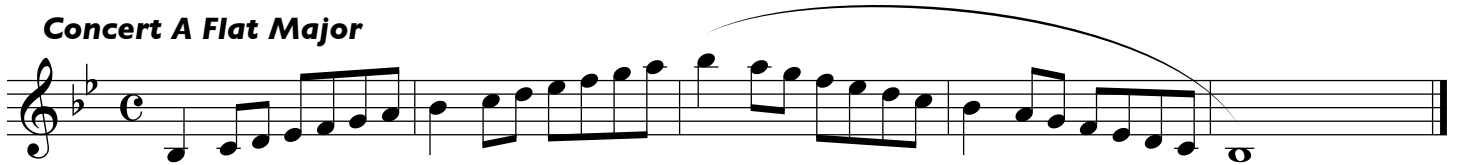
Essential Major Scales

Concert D Flat Major



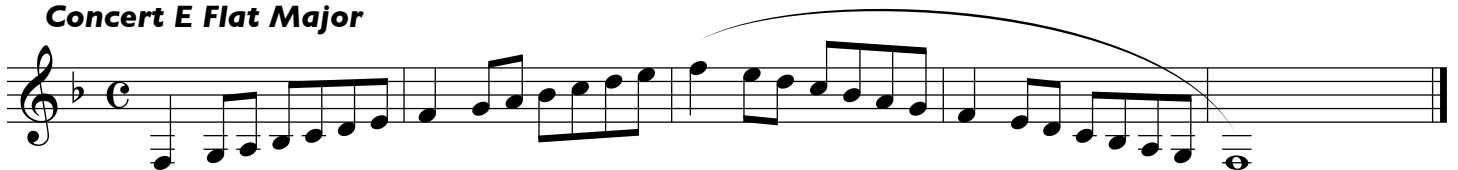
Musical notation for the Concert D Flat Major scale, written in treble clef with a key signature of two flats (Bb, Eb) and a common time signature (C). The scale is presented as a single melodic line with a slur over the entire sequence.

Concert A Flat Major



Musical notation for the Concert A Flat Major scale, written in treble clef with a key signature of one flat (Bb) and a common time signature (C). The scale is presented as a single melodic line with a slur over the entire sequence.

Concert E Flat Major



Musical notation for the Concert E Flat Major scale, written in treble clef with a key signature of three flats (Bb, Eb, Ab) and a common time signature (C). The scale is presented as a single melodic line with a slur over the entire sequence.

Concert D Major



Musical notation for the Concert D Major scale, written in treble clef with a key signature of two sharps (F#, C#) and a common time signature (C). The scale is presented as a single melodic line with a slur over the entire sequence.

Concert A Major



Musical notation for the Concert A Major scale, written in treble clef with a key signature of three sharps (F#, C#, G#) and a common time signature (C). The scale is presented as a single melodic line with a slur over the entire sequence.

Concert E Major



Musical notation for the Concert E Major scale, written in treble clef with a key signature of four sharps (F#, C#, G#, D#) and a common time signature (C). The scale is presented as a single melodic line with a slur over the entire sequence.

Concert C Major



Musical notation for the Concert C Major scale, written in treble clef with a key signature of one sharp (F#) and a common time signature (C). The scale is presented as a single melodic line with a slur over the entire sequence.

Concert G Major



Musical notation for the Concert G Major scale, written in treble clef with a key signature of two sharps (F#, C#) and a common time signature (C). The scale is presented as a single melodic line with a slur over the entire sequence.

Concert F Major



Musical notation for the Concert F Major scale, written in treble clef with a key signature of one sharp (F#) and a common time signature (C). The scale is presented as a single melodic line with a slur over the entire sequence.

Concert B Flat Major



Musical notation for the Concert B Flat Major scale, written in treble clef with a key signature of two flats (Bb, Eb) and a common time signature (C). The scale is presented as a single melodic line with a slur over the entire sequence.

Bass Clarinet

Essential Major Scales

Concert D Flat Major



Musical notation for the Concert D Flat Major scale, written in treble clef with a key signature of two flats (Bb, Eb) and a common time signature (C). The scale is presented in two directions: ascending and descending, with a slur over the entire line.

Concert A Flat Major



Musical notation for the Concert A Flat Major scale, written in treble clef with a key signature of three flats (Bb, Eb, Ab) and a common time signature (C). The scale is presented in two directions: ascending and descending, with a slur over the entire line.

Concert E Flat Major



Musical notation for the Concert E Flat Major scale, written in treble clef with a key signature of three flats (Bb, Eb, Ab, Db) and a common time signature (C). The scale is presented in two directions: ascending and descending, with a slur over the entire line.

Concert D Major



Musical notation for the Concert D Major scale, written in treble clef with a key signature of two sharps (F#, C#) and a common time signature (C). The scale is presented in two directions: ascending and descending, with a slur over the entire line.

Concert A Major



Musical notation for the Concert A Major scale, written in treble clef with a key signature of three sharps (F#, C#, G#) and a common time signature (C). The scale is presented in two directions: ascending and descending, with a slur over the entire line.

Concert E Major



Musical notation for the Concert E Major scale, written in treble clef with a key signature of four sharps (F#, C#, G#, D#) and a common time signature (C). The scale is presented in two directions: ascending and descending, with a slur over the entire line.

Concert C Major



Musical notation for the Concert C Major scale, written in treble clef with a key signature of no sharps or flats and a common time signature (C). The scale is presented in two directions: ascending and descending, with a slur over the entire line.

Concert G Major



Musical notation for the Concert G Major scale, written in treble clef with a key signature of one sharp (F#) and a common time signature (C). The scale is presented in two directions: ascending and descending, with a slur over the entire line.

Concert F Major



Musical notation for the Concert F Major scale, written in treble clef with a key signature of one flat (Bb) and a common time signature (C). The scale is presented in two directions: ascending and descending, with a slur over the entire line.

Concert B Flat Major



Musical notation for the Concert B Flat Major scale, written in treble clef with a key signature of two flats (Bb, Eb) and a common time signature (C). The scale is presented in two directions: ascending and descending, with a slur over the entire line.

Alto Sax.

Essential Major Scales

Concert D Flat Major



Musical notation for the Concert D Flat Major scale, starting on D4 and ending on D5. The scale is written in treble clef with a key signature of two flats (Bb and Eb) and a common time signature (C). The notes are D, Eb, E, F, G, Ab, A, Bb, B, C, D.

Concert A Flat Major



Musical notation for the Concert A Flat Major scale, starting on A3 and ending on A4. The scale is written in treble clef with a key signature of two flats (Bb and Eb) and a common time signature (C). The notes are A, Bb, B, C, D, Eb, E, F, G, Ab, A.

Concert E Flat Major



Musical notation for the Concert E Flat Major scale, starting on E3 and ending on E4. The scale is written in treble clef with a key signature of two flats (Bb and Eb) and a common time signature (C). The notes are E, F, G, Ab, A, Bb, B, C, D, Eb, E.

Concert D Major



Musical notation for the Concert D Major scale, starting on D4 and ending on D5. The scale is written in treble clef with a key signature of three sharps (F#, C#, G#) and a common time signature (C). The notes are D, E, F#, G, A, B, C, D.

Concert A Major



Musical notation for the Concert A Major scale, starting on A3 and ending on A4. The scale is written in treble clef with a key signature of three sharps (F#, C#, G#) and a common time signature (C). The notes are A, B, C, D, E, F#, G, A.

Concert E Major



Musical notation for the Concert E Major scale, starting on E3 and ending on E4. The scale is written in treble clef with a key signature of three sharps (F#, C#, G#) and a common time signature (C). The notes are E, F#, G, A, B, C, D, E.

Concert C Major



Musical notation for the Concert C Major scale, starting on C4 and ending on C5. The scale is written in treble clef with a key signature of no sharps or flats and a common time signature (C). The notes are C, D, E, F, G, A, B, C.

Concert G Major



Musical notation for the Concert G Major scale, starting on G3 and ending on G4. The scale is written in treble clef with a key signature of one sharp (F#) and a common time signature (C). The notes are G, A, B, C, D, E, F#, G.

Concert F Major



Musical notation for the Concert F Major scale, starting on F3 and ending on F4. The scale is written in treble clef with a key signature of one sharp (F#) and a common time signature (C). The notes are F, G, A, B, C, D, E, F.

Concert B Flat Major



Musical notation for the Concert B Flat Major scale, starting on B2 and ending on B3. The scale is written in treble clef with a key signature of one sharp (F#) and a common time signature (C). The notes are B, C, D, E, F, G, A, B.

Tenor Sax.

Essential Major Scales

Concert D Flat Major



Musical notation for the Concert D Flat Major scale, written in treble clef with a key signature of two flats (Bb, Eb) and a common time signature (C). The scale is presented as an ascending and descending sequence of eighth notes, starting on D4 and ending on D5. A slur covers the entire scale.

Concert A Flat Major



Musical notation for the Concert A Flat Major scale, written in treble clef with a key signature of one flat (Bb) and a common time signature (C). The scale is presented as an ascending and descending sequence of eighth notes, starting on A3 and ending on A4. A slur covers the entire scale.

Concert E Flat Major



Musical notation for the Concert E Flat Major scale, written in treble clef with a key signature of three flats (Bb, Eb, Ab) and a common time signature (C). The scale is presented as an ascending and descending sequence of eighth notes, starting on E3 and ending on E4. A slur covers the entire scale.

Concert D Major



Musical notation for the Concert D Major scale, written in treble clef with a key signature of two sharps (F#, C#) and a common time signature (C). The scale is presented as an ascending and descending sequence of eighth notes, starting on D4 and ending on D5. A slur covers the entire scale.

Concert A Major



Musical notation for the Concert A Major scale, written in treble clef with a key signature of three sharps (F#, C#, G#) and a common time signature (C). The scale is presented as an ascending and descending sequence of eighth notes, starting on A3 and ending on A4. A slur covers the entire scale.

Concert E Major



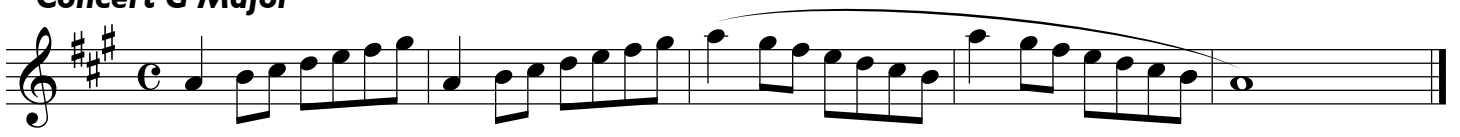
Musical notation for the Concert E Major scale, written in treble clef with a key signature of four sharps (F#, C#, G#, D#) and a common time signature (C). The scale is presented as an ascending and descending sequence of eighth notes, starting on E3 and ending on E4. A slur covers the entire scale.

Concert C Major



Musical notation for the Concert C Major scale, written in treble clef with a key signature of one sharp (F#) and a common time signature (C). The scale is presented as an ascending and descending sequence of eighth notes, starting on C4 and ending on C5. A slur covers the entire scale.

Concert G Major



Musical notation for the Concert G Major scale, written in treble clef with a key signature of two sharps (F#, C#) and a common time signature (C). The scale is presented as an ascending and descending sequence of eighth notes, starting on G3 and ending on G4. A slur covers the entire scale.

Concert F Major



Musical notation for the Concert F Major scale, written in treble clef with a key signature of one sharp (F#) and a common time signature (C). The scale is presented as an ascending and descending sequence of eighth notes, starting on F3 and ending on F4. A slur covers the entire scale.

Concert B Flat Major



Musical notation for the Concert B Flat Major scale, written in treble clef with a key signature of two flats (Bb, Eb) and a common time signature (C). The scale is presented as an ascending and descending sequence of eighth notes, starting on B2 and ending on B3. A slur covers the entire scale.

Baritone Sax.

Essential Major Scales

Concert D Flat Major



Musical notation for the Concert D Flat Major scale, written in treble clef with a key signature of two flats (Bb, Eb) and a common time signature (C). The scale is presented as a single melodic line with a slur over the entire range.

Concert A Flat Major



Musical notation for the Concert A Flat Major scale, written in treble clef with a key signature of three flats (Bb, Eb, Ab) and a common time signature (C). The scale is presented as a single melodic line with a slur over the entire range.

Concert E Flat Major



Musical notation for the Concert E Flat Major scale, written in treble clef with a key signature of three flats (Bb, Eb, Ab) and a common time signature (C). The scale is presented as a single melodic line with a slur over the entire range.

Concert D Major



Musical notation for the Concert D Major scale, written in treble clef with a key signature of two sharps (F#, C#) and a common time signature (C). The scale is presented as a single melodic line with a slur over the entire range.

Concert A Major



Musical notation for the Concert A Major scale, written in treble clef with a key signature of three sharps (F#, C#, G#) and a common time signature (C). The scale is presented as a single melodic line with a slur over the entire range.

Concert E Major



Musical notation for the Concert E Major scale, written in treble clef with a key signature of four flats (Bbb, Ebb, Abb, Dbb) and a common time signature (C). The scale is presented as a single melodic line with a slur over the entire range.

Concert C Major



Musical notation for the Concert C Major scale, written in treble clef with a key signature of two sharps (F#, C#) and a common time signature (C). The scale is presented as a single melodic line with a slur over the entire range.

Concert G Major



Musical notation for the Concert G Major scale, written in treble clef with a key signature of three sharps (F#, C#, G#) and a common time signature (C). The scale is presented as a single melodic line with a slur over the entire range.

Concert F Major



Musical notation for the Concert F Major scale, written in treble clef with a key signature of one sharp (F#) and a common time signature (C). The scale is presented as a single melodic line with a slur over the entire range.

Concert B Flat Major



Musical notation for the Concert B Flat Major scale, written in treble clef with a key signature of one flat (Bb) and a common time signature (C). The scale is presented as a single melodic line with a slur over the entire range.

Trumpet in Bb

Essential Major Scales

Concert D Flat Major

Musical notation for the Concert D Flat Major scale. It is written on a single staff in treble clef, common time (C), and B-flat major. The scale consists of two lines: an ascending line and a descending line, both starting on D. The notes are D, E-flat, F, G, A, B-flat, C, D. The descending line is D, C, B-flat, A, G, F, E-flat, D. A slur covers the entire scale.

Concert A Flat Major

Musical notation for the Concert A Flat Major scale. It is written on a single staff in treble clef, common time (C), and A-flat major. The scale consists of two lines: an ascending line and a descending line, both starting on A. The notes are A, B-flat, C, D, E, F, G, A. The descending line is A, G, F, E, D, C, B-flat, A. A slur covers the entire scale.

Concert E Flat Major

Musical notation for the Concert E Flat Major scale. It is written on a single staff in treble clef, common time (C), and E-flat major. The scale consists of two lines: an ascending line and a descending line, both starting on E. The notes are E, F, G, A, B, C, D, E. The descending line is E, D, C, B, A, G, F, E. A slur covers the entire scale.

Concert D Major

Musical notation for the Concert D Major scale. It is written on a single staff in treble clef, common time (C), and D major. The scale consists of two lines: an ascending line and a descending line, both starting on D. The notes are D, E, F#, G, A, B, C#, D. The descending line is D, C#, B, A, G, F#, E, D. A slur covers the entire scale.

Concert A Major

Musical notation for the Concert A Major scale. It is written on a single staff in treble clef, common time (C), and A major. The scale consists of two lines: an ascending line and a descending line, both starting on A. The notes are A, B, C#, D, E, F#, G#, A. The descending line is A, G#, F#, E, D, C#, B, A. A slur covers the entire scale.

Concert E Major

Musical notation for the Concert E Major scale. It is written on a single staff in treble clef, common time (C), and E major. The scale consists of two lines: an ascending line and a descending line, both starting on E. The notes are E, F#, G#, A, B, C#, D#, E. The descending line is E, D#, C#, B, A, G#, F#, E. A slur covers the entire scale.

Concert C Major

Musical notation for the Concert C Major scale. It is written on a single staff in treble clef, common time (C), and C major. The scale consists of two lines: an ascending line and a descending line, both starting on C. The notes are C, D, E, F, G, A, B, C. The descending line is C, B, A, G, F, E, D, C. A slur covers the entire scale.

Concert G Major

Musical notation for the Concert G Major scale. It is written on a single staff in treble clef, common time (C), and G major. The scale consists of two lines: an ascending line and a descending line, both starting on G. The notes are G, A, B, C, D, E, F#, G. The descending line is G, F#, E, D, C, B, A, G. A slur covers the entire scale.

Concert F Major

Musical notation for the Concert F Major scale. It is written on a single staff in treble clef, common time (C), and F major. The scale consists of two lines: an ascending line and a descending line, both starting on F. The notes are F, G, A, B, C, D, E, F. The descending line is F, E, D, C, B, A, G, F. A slur covers the entire scale.

Concert B Flat Major

Musical notation for the Concert B Flat Major scale. It is written on a single staff in treble clef, common time (C), and B-flat major. The scale consists of two lines: an ascending line and a descending line, both starting on B. The notes are B, C, D, E, F, G, A, B. The descending line is B, A, G, F, E, D, C, B. A slur covers the entire scale.

Horn in F

Essential Major Scales

Concert D Flat Major



Musical notation for the Concert D Flat Major scale, written in treble clef with a key signature of three flats (B-flat, E-flat, A-flat) and a common time signature (C). The scale is presented as an ascending and descending sequence of eighth notes, with a slur over the entire line.

Concert A Flat Major



Musical notation for the Concert A Flat Major scale, written in treble clef with a key signature of two flats (B-flat, E-flat) and a common time signature (C). The scale is presented as an ascending and descending sequence of eighth notes, with a slur over the entire line.

Concert E Flat Major



Musical notation for the Concert E Flat Major scale, written in treble clef with a key signature of one flat (B-flat) and a common time signature (C). The scale is presented as an ascending and descending sequence of eighth notes, with a slur over the entire line.

Concert D Major



Musical notation for the Concert D Major scale, written in treble clef with a key signature of two sharps (F-sharp, C-sharp) and a common time signature (C). The scale is presented as an ascending and descending sequence of eighth notes, with a slur over the entire line.

Concert A Major



Musical notation for the Concert A Major scale, written in treble clef with a key signature of three sharps (F-sharp, C-sharp, G-sharp) and a common time signature (C). The scale is presented as an ascending and descending sequence of eighth notes, with a slur over the entire line.

Concert E Major



Musical notation for the Concert E Major scale, written in treble clef with a key signature of four sharps (F-sharp, C-sharp, G-sharp, D-sharp) and a common time signature (C). The scale is presented as an ascending and descending sequence of eighth notes, with a slur over the entire line.

Concert C Major



Musical notation for the Concert C Major scale, written in treble clef with a key signature of one sharp (F-sharp) and a common time signature (C). The scale is presented as an ascending and descending sequence of eighth notes, with a slur over the entire line.

Concert G Major



Musical notation for the Concert G Major scale, written in treble clef with a key signature of two sharps (F-sharp, C-sharp) and a common time signature (C). The scale is presented as an ascending and descending sequence of eighth notes, with a slur over the entire line.

Concert F Major



Musical notation for the Concert F Major scale, written in treble clef with a key signature of one sharp (F-sharp) and a common time signature (C). The scale is presented as an ascending and descending sequence of eighth notes, with a slur over the entire line.

Concert B Flat Major



Musical notation for the Concert B Flat Major scale, written in treble clef with a key signature of two flats (B-flat, E-flat) and a common time signature (C). The scale is presented as an ascending and descending sequence of eighth notes, with a slur over the entire line.

Trombone

Essential Major Scales

Concert D Flat Major

Musical notation for the Concert D Flat Major scale in bass clef, 4/4 time. The scale starts on D3 and ends on D4. The notation includes a treble clef, a key signature of two flats (Bb and Eb), and a common time signature (C). The scale is written in a single line with a final double bar line.

Concert A Flat Major

Musical notation for the Concert A Flat Major scale in bass clef, 4/4 time. The scale starts on A2 and ends on A3. The notation includes a treble clef, a key signature of three flats (Bb, Eb, and Ab), and a common time signature (C). The scale is written in a single line with a final double bar line.

Concert E Flat Major

Musical notation for the Concert E Flat Major scale in bass clef, 4/4 time. The scale starts on E2 and ends on E3. The notation includes a treble clef, a key signature of three flats (Bb, Eb, and Ab), and a common time signature (C). The scale is written in a single line with a final double bar line.

Concert D Major

Musical notation for the Concert D Major scale in bass clef, 4/4 time. The scale starts on D3 and ends on D4. The notation includes a treble clef, a key signature of two sharps (F# and C#), and a common time signature (C). The scale is written in a single line with a final double bar line.

Concert A Major

Musical notation for the Concert A Major scale in bass clef, 4/4 time. The scale starts on A2 and ends on A3. The notation includes a treble clef, a key signature of three sharps (F#, C#, and G#), and a common time signature (C). The scale is written in a single line with a final double bar line.

Concert E Major

Musical notation for the Concert E Major scale in bass clef, 4/4 time. The scale starts on E2 and ends on E3. The notation includes a treble clef, a key signature of four sharps (F#, C#, G#, and D#), and a common time signature (C). The scale is written in a single line with a final double bar line.

Concert C Major

Musical notation for the Concert C Major scale in bass clef, 4/4 time. The scale starts on C3 and ends on C4. The notation includes a treble clef, a key signature of no sharps or flats, and a common time signature (C). The scale is written in a single line with a final double bar line.

Concert G Major

Musical notation for the Concert G Major scale in bass clef, 4/4 time. The scale starts on G2 and ends on G3. The notation includes a treble clef, a key signature of one sharp (F#), and a common time signature (C). The scale is written in a single line with a final double bar line.

Concert F Major

Musical notation for the Concert F Major scale in bass clef, 4/4 time. The scale starts on F2 and ends on F3. The notation includes a treble clef, a key signature of one flat (Bb), and a common time signature (C). The scale is written in a single line with a final double bar line.

Concert B Flat Major

Musical notation for the Concert B Flat Major scale in bass clef, 4/4 time. The scale starts on B1 and ends on B2. The notation includes a treble clef, a key signature of two flats (Bb and Eb), and a common time signature (C). The scale is written in a single line with a final double bar line.

Baritone (B.C.)

Essential Major Scales

Concert D Flat Major



Concert A Flat Major



Concert E Flat Major



Concert D Major



Concert A Major



Concert E Major



Concert C Major



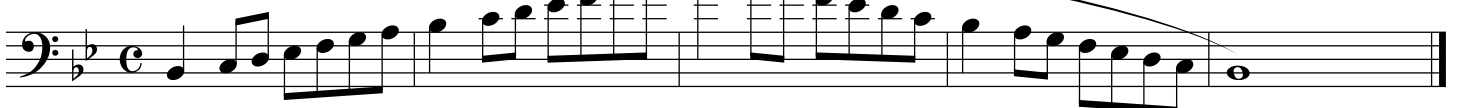
Concert G Major



Concert F Major



Concert B Flat Major



Tuba

Essential Major Scales

Concert D Flat Major



Musical notation for the Concert D Flat Major scale in bass clef, common time. The scale consists of 11 notes: D2, E2, F2, G2, A2, Bb2, C3, D3, E3, F3, G3. The notes are written as quarter notes with a slur over the entire scale.

Concert A Flat Major



Musical notation for the Concert A Flat Major scale in bass clef, common time. The scale consists of 11 notes: A2, Bb2, C3, D3, E3, F3, G3, Ab3, Bb3, C4, D4. The notes are written as quarter notes with a slur over the entire scale.

Concert E Flat Major



Musical notation for the Concert E Flat Major scale in bass clef, common time. The scale consists of 11 notes: E2, F2, G2, Ab2, Bb2, C3, D3, E3, F3, G3, Ab3. The notes are written as quarter notes with a slur over the entire scale.

Concert D Major



Musical notation for the Concert D Major scale in bass clef, common time. The scale consists of 11 notes: D2, E2, F2, G2, A2, B2, C3, D3, E3, F3, G3. The notes are written as quarter notes with a slur over the entire scale.

Concert A Major



Musical notation for the Concert A Major scale in bass clef, common time. The scale consists of 11 notes: A2, B2, C3, D3, E3, F3, G3, A3, B3, C4, D4. The notes are written as quarter notes with a slur over the entire scale.

Concert E Major



Musical notation for the Concert E Major scale in bass clef, common time. The scale consists of 11 notes: E2, F2, G2, A2, B2, C3, D3, E3, F3, G3, A3. The notes are written as quarter notes with a slur over the entire scale.

Concert C Major



Musical notation for the Concert C Major scale in bass clef, common time. The scale consists of 11 notes: C2, D2, E2, F2, G2, A2, B2, C3, D3, E3, F3. The notes are written as quarter notes with a slur over the entire scale.

Concert G Major




Musical notation for the Concert G Major scale in bass clef, common time. The scale consists of 11 notes: G2, A2, B2, C3, D3, E3, F3, G3, A3, B3, C4. The notes are written as quarter notes with a slur over the entire scale.

Concert F Major



Musical notation for the Concert F Major scale in bass clef, common time. The scale consists of 11 notes: F2, G2, A2, B2, C3, D3, E3, F3, G3, A3, B3. The notes are written as quarter notes with a slur over the entire scale.

Concert B Flat Major



Musical notation for the Concert B Flat Major scale in bass clef, common time. The scale consists of 11 notes: Bb2, C3, D3, E3, F3, G3, Ab3, Bb3, C4, D4, Eb4. The notes are written as quarter notes with a slur over the entire scale.

Xylophone

Essential Major Scales

Concert D Flat Major



Concert A Flat Major



Concert E Flat Major



Concert D Major



Concert A Major



Concert E Major



Concert C Major



Concert G Major



Concert F Major



Concert B Flat Major

