

Flute

Major Scales

Concert Gb Major Scale

Musical notation for the Concert Gb Major Scale. It is written on a single treble clef staff in common time (C). The key signature has six flats (Bb, Eb, Ab, Db, Gb, Cb). The scale is played in two directions: ascending and descending, with slurs over each phrase. The piece concludes with a whole note Gb.

Concert Db Major Scale

Musical notation for the Concert Db Major Scale. It is written on a single treble clef staff in common time (C). The key signature has five flats (Bb, Eb, Ab, Db, Gb). The scale is played in two directions: ascending and descending, with slurs over each phrase. The piece concludes with a whole note Db.

Concert Ab Major Scale

Musical notation for the Concert Ab Major Scale. It is written on a single treble clef staff in common time (C). The key signature has four flats (Bb, Eb, Ab, Db). The scale is played in two directions: ascending and descending, with slurs over each phrase. The piece concludes with a whole note Ab.

Concert Eb Flat Major

Musical notation for the Concert Eb Flat Major Scale. It is written on a single treble clef staff in common time (C). The key signature has three flats (Bb, Eb, Ab). The scale is played in two directions: ascending and descending, with slurs over each phrase. The piece concludes with a whole note Eb.

Concert Bb Major Scale

Musical notation for the Concert Bb Major Scale. It is written on a single treble clef staff in common time (C). The key signature has two flats (Bb, Eb). The scale is played in two directions: ascending and descending, with slurs over each phrase. The piece concludes with a whole note Bb.

Concert F Major Scale

Musical notation for the Concert F Major Scale. It is written on a single treble clef staff in common time (C). The key signature has one flat (Bb). The scale is played in two directions: ascending and descending, with slurs over each phrase. The piece concludes with a whole note F.

Concert C Major Scale

Musical notation for the Concert C Major Scale. It is written on a single treble clef staff in common time (C). The key signature has no sharps or flats. The scale is played in two directions: ascending and descending, with slurs over each phrase. The piece concludes with a whole note C.

Concert G Major Scale

Musical notation for the Concert G Major Scale. It is written on a single treble clef staff in common time (C). The key signature has one sharp (F#). The scale is played in two directions: ascending and descending, with slurs over each phrase. The piece concludes with a whole note G.

Concert D Major Scale

Musical notation for the Concert D Major Scale. It is written on a single treble clef staff in common time (C). The key signature has two sharps (F#, C#). The scale is played in two directions: ascending and descending, with slurs over each phrase. The piece concludes with a whole note D.

Concert A Major Scale

Musical notation for the Concert A Major Scale. It is written on a single treble clef staff in common time (C). The key signature has three sharps (F#, C#, G#). The scale is played in two directions: ascending and descending, with slurs over each phrase. The piece concludes with a whole note A.

Flute

Major Scales

Concert E Major Scale

Concert B Major Scale

Concert F Chromatic Scale

MAJOR SCALE TEST – Performance Assessment

FA: 9-12.2.1:
Perform a variety of musical elements with appropriate understanding, expression and style individually and in a group.

Performance Assessment:
Students will memorize all major scales and play along with the metronome at 100 beats per minute (100 bpm), quarter note equals one beat.

RUBRIC

4	3	2	1	0
ADVANCED	PROFICIENT	PARTIALLY PROFICIENT	NOVICE	
Scale played flawlessly, no hesitations, rhythmically accurate with the metronome. Accurate notes and pitches and articulations.	Few pitch and note inaccuracies, not together with metronome, but rhythmically consistent.	Many pitch and note inaccuracies, rhythmically inaccurate, not with metronome, many hesitations and restarts	Mostly inaccuracies in pitches and incorrect note sequence, many stops and restarts. Unable to recognize scale or pitches	Did no make attempt to play.

Oboe

Major Scales

Concert Gb Major Scale



Concert Db Major Scale



Concert Ab Major Scale



Concert Eb Flat Major



Concert Bb Major Scale



Concert F Major Scale



Concert C Major Scale



Concert G Major Scale



Concert D Major Scale



Concert A Major Scale



Oboe

Major Scales

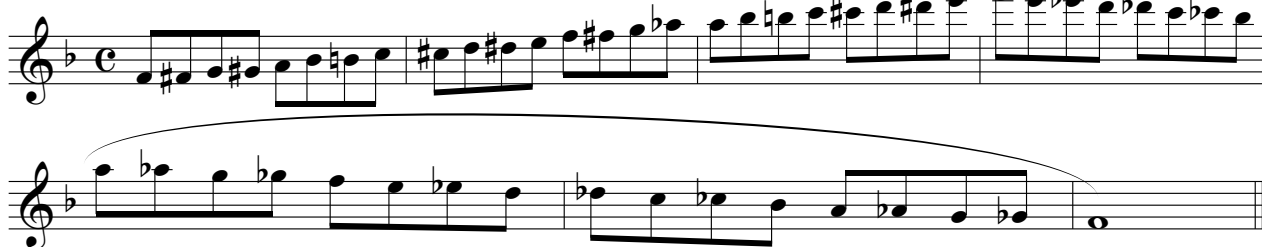
Concert E Major Scale



Concert B Major Scale



Concert F Chromatic Scale



MAJOR SCALE TEST – Performance Assessment

FA: 9-12.2.1:

Perform a variety of musical elements with appropriate understanding, expression and style individually and in a group.

Performance Assessment:

Students will memorize all major scales and play along with the metronome at 100 beats per minute (100 bpm), quarter note equals one beat.

RUBRIC

4	3	2	1	0
ADVANCED	PROFICIENT	PARTIALLY PROFICIENT	NOVICE	
Scale played flawlessly, no hesitations, rhythmically accurate with the metronome. Accurate notes and pitches and articulations.	Few pitch and note inaccuracies, not together with metronome, but rhythmically consistent.	Many pitch and note inaccuracies, rhythmically inaccurate, not with metronome, many hesitations and restarts	Mostly inaccuracies in pitches and incorrect note sequence, many stops and restarts. Unable to recognize scale or pitches	Did no make attempt to play.

Clarinet in Bb

Major Scales

Concert Gb Major Scale (Ab Major)



Concert Db Major Scale (Eb Major)



Concert Ab Major Scale (Bb Major)



Concert Eb Flat Major (F Major)



Concert Bb Major Scale (C Major)



Concert F Major Scale (G Major)



Concert C Major Scale (D Major)



Concert G Major Scale (A Major)



Concert D Major Scale (E Major)



Concert A Major Scale (B Major)



Clarinet in Bb

Major Scales

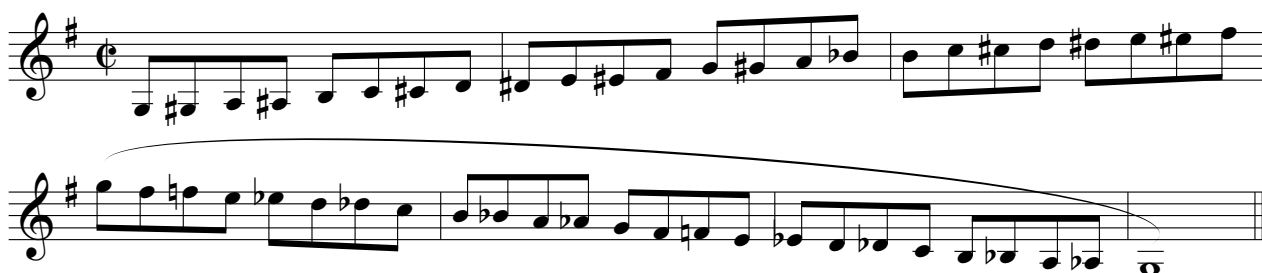
Concert E Major Scale (F# Major)



Concert B Major Scale (Db Major)



Concert F Chromatic Scale



MAJOR SCALE TEST - Performance Assessment

FA: 9-12.2.1:

Perform a variety of musical elements with appropriate understanding, expression and style individually and in a group.

Performance Assessment:

Students will memorize all major scales and play along with the metronome at 100 beats per minute (100 bpm), quarter note equals one beat.

RUBRIC

4	3	2	1	0
ADVANCED	PROFICIENT	PARTIALLY PROFICIENT	NOVICE	
Scale played flawlessly, no hesitations, rhythmically accurate with the metronome. Accurate notes and pitches and articulations.	Few pitch and note inaccuracies, not together with metronome, but rhythmically consistent.	Many pitch and note inaccuracies, rhythmically inaccurate, not with metronome, many hesitations and restarts	Mostly inaccuracies in pitches and incorrect note sequence, many stops and restarts. Unable to recognize scale or pitches	Did no make attempt to play.

Alto Sax.

Major Scales

Concert E Major Scale (Db Major)



Concert B Major Scale (Ab Major)



Concert F Chromatic Scale



MAJOR SCALE TEST – Performance Assessment

FA: 9-12.2.1:

Perform a variety of musical elements with appropriate understanding, expression and style individually and in a group.

Performance Assessment:

Students will memorize all major scales and play along with the metronome at 100 beats per minute (100 bpm), quarter note equals one beat.

RUBRIC

4	3	2	1	0
ADVANCED	PROFICIENT	PARTIALLY PROFICIENT	NOVICE	
Scale played flawlessly, no hesitations, rhythmically accurate with the metronome. Accurate notes and pitches and articulations.	Few pitch and note inaccuracies, not together with metronome, but rhythmically consistent.	Many pitch and note inaccuracies, rhythmically inaccurate, not with metronome, many hesitations and restarts	Mostly inaccuracies in pitches and incorrect note sequence, many stops and restarts. Unable to recognize scale or pitches	Did no make attempt to play.

Tenor Sax.

Major Scales

Concert Gb Major Scale (Ab Major)



Concert Db Major Scale (Eb Major)



Concert Ab Major Scale (Bb Major)



Concert Eb Flat Major (F Major)



Concert Bb Major Scale (C Major)



Concert F Major Scale (G Major)



Concert C Major Scale (D Major)



Concert G Major Scale (A Major)



Concert D Major Scale (E Major)



Concert A Major Scale (B Major)



Tenor Sax.

Major Scales

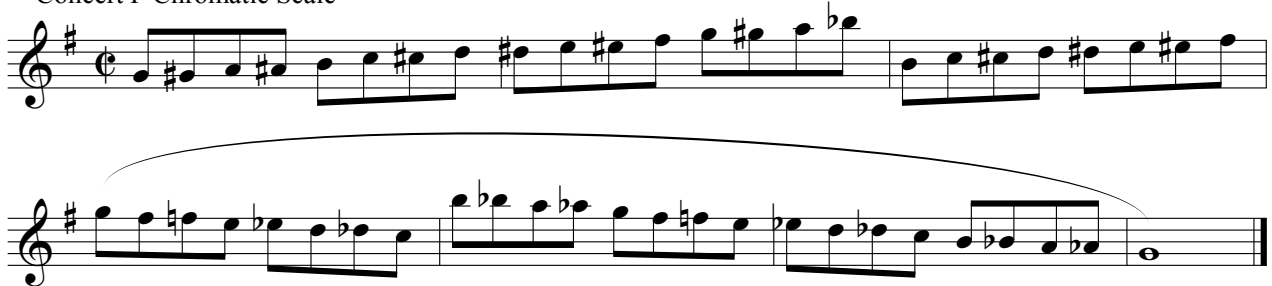
Concert E Major Scale (F# Major)



Concert B Major Scale (Db Major)



Concert F Chromatic Scale



MAJOR SCALE TEST – Performance Assessment

FA: 9-12.2.1:

Perform a variety of musical elements with appropriate understanding, expression and style individually and in a group.

Performance Assessment:

Students will memorize all major scales and play along with the metronome at 100 beats per minute (100 bpm), quarter note equals one beat.

RUBRIC

4	3	2	1	0
ADVANCED	PROFICIENT	PARTIALLY PROFICIENT	NOVICE	
Scale played flawlessly, no hesitations, rhythmically accurate with the metronome. Accurate notes and pitches and articulations.	Few pitch and note inaccuracies, not together with metronome, but rhythmically consistent.	Many pitch and note inaccuracies, rhythmically inaccurate, not with metronome, many hesitations and restarts	Mostly inaccuracies in pitches and incorrect note sequence, many stops and restarts. Unable to recognize scale or pitches	Did no make attempt to play.

Trumpet in Bb

Major Scales

Concert Gb Major Scale (Ab Major)



Concert Db Major Scale (Eb Major)



Concert Ab Major Scale (Bb Major)



Concert Eb Flat Major (F Major)



Concert Bb Major Scale (C Major)



Concert F Major Scale (G Major)



Concert C Major Scale (D Major)



Concert G Major Scale (A Major)



Concert D Major Scale (E Major)



Concert A Major Scale (B Major)



Trumpet in Bb

Major Scales

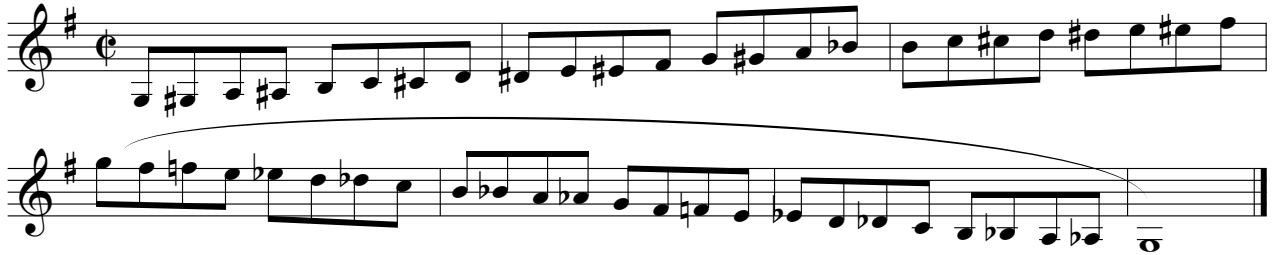
Concert E Major Scale (F# Major)



Concert B Major Scale (Db Major)



Concert F Chromatic Scale



MAJOR SCALE TEST – Performance Assessment

FA: 9-12.2.1:

Perform a variety of musical elements with appropriate understanding, expression and style individually and in a group.

Performance Assessment:

Students will memorize all major scales and play along with the metronome at 100 beats per minute (100 bpm), quarter note equals one beat.

RUBRIC

4	3	2	1	0
ADVANCED	PROFICIENT	PARTIALLY PROFICIENT	NOVICE	
Scale played flawlessly, no hesitations, rhythmically accurate with the metronome. Accurate notes and pitches and articulations.	Few pitch and note inaccuracies, not together with metronome, but rhythmically consistent.	Many pitch and note inaccuracies, rhythmically inaccurate, not with metronome, many hesitations and restarts	Mostly inaccuracies in pitches and incorrect note sequence, many stops and restarts. Unable to recognize scale or pitches	Did no make attempt to play.

Horn in F

Major Scales

Concert Gb Major Scale (Db Major)

Musical notation for the Concert Gb Major Scale (Db Major) in the Horn in F part. The scale is written in a treble clef with a key signature of three flats (Bb, Eb, Ab) and a common time signature (C). The notation shows the ascending and descending scales with slurs and a final whole note on the tonic.

Concert Db Major Scale (Ab Major)

Musical notation for the Concert Db Major Scale (Ab Major) in the Horn in F part. The scale is written in a treble clef with a key signature of four flats (Bb, Eb, Ab, Db) and a common time signature (C). The notation shows the ascending and descending scales with slurs and a final whole note on the tonic.

Concert Ab Major Scale (Eb Major)

Musical notation for the Concert Ab Major Scale (Eb Major) in the Horn in F part. The scale is written in a treble clef with a key signature of five flats (Bb, Eb, Ab, Db, Gb) and a common time signature (C). The notation shows the ascending and descending scales with slurs and a final whole note on the tonic.

Concert Eb Flat Major (Bb Major)

Musical notation for the Concert Eb Flat Major (Bb Major) in the Horn in F part. The scale is written in a treble clef with a key signature of two flats (Bb, Eb) and a common time signature (C). The notation shows the ascending and descending scales with slurs and a final whole note on the tonic.

Concert Bb Major Scale (F Major)

Musical notation for the Concert Bb Major Scale (F Major) in the Horn in F part. The scale is written in a treble clef with a key signature of one flat (Bb) and a common time signature (C). The notation shows the ascending and descending scales with slurs and a final whole note on the tonic.

Concert F Major Scale (C Major)

Musical notation for the Concert F Major Scale (C Major) in the Horn in F part. The scale is written in a treble clef with a common time signature (C). The notation shows the ascending and descending scales with slurs and a final whole note on the tonic.

Concert C Major Scale (G Major)

Musical notation for the Concert C Major Scale (G Major) in the Horn in F part. The scale is written in a treble clef with a key signature of one sharp (F#) and a common time signature (C). The notation shows the ascending and descending scales with slurs and a final whole note on the tonic.

Concert G Major Scale (D Major)

Musical notation for the Concert G Major Scale (D Major) in the Horn in F part. The scale is written in a treble clef with a key signature of two sharps (F#, C#) and a common time signature (C). The notation shows the ascending and descending scales with slurs and a final whole note on the tonic.

Concert D Major Scale (A Major)

Musical notation for the Concert D Major Scale (A Major) in the Horn in F part. The scale is written in a treble clef with a key signature of three sharps (F#, C#, G#) and a common time signature (C). The notation shows the ascending and descending scales with slurs and a final whole note on the tonic.

Concert A Major Scale (E Major)

Musical notation for the Concert A Major Scale (E Major) in the Horn in F part. The scale is written in a treble clef with a key signature of four sharps (F#, C#, G#, D#) and a common time signature (C). The notation shows the ascending and descending scales with slurs and a final whole note on the tonic.

Horn in F

Major Scales

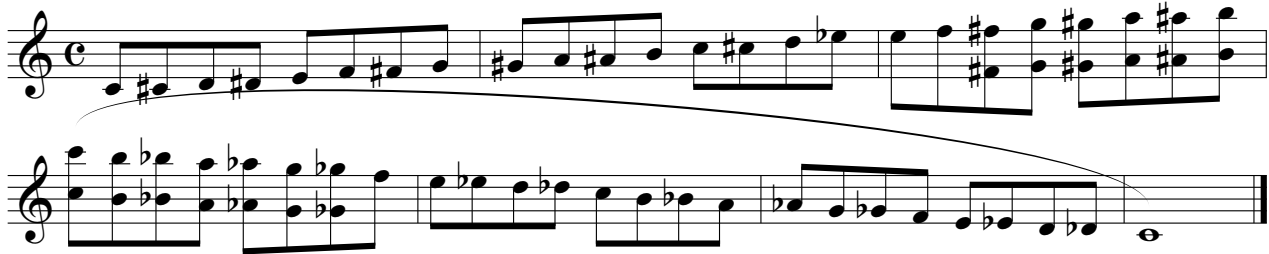
Concert E Major Scale (B Major)



Concert B Major Scale (F# Major)



Concert F Chromatic Scale



MAJOR SCALE TEST – Performance Assessment

FA: 9-12.2.1:

Perform a variety of musical elements with appropriate understanding, expression and style individually and in a group.

Performance Assessment:

Students will memorize all major scales and play along with the metronome at 100 beats per minute (100 bpm), quarter note equals one beat.

RUBRIC

4	3	2	1	0
ADVANCED	PROFICIENT	PARTIALLY PROFICIENT	NOVICE	
Scale played flawlessly, no hesitations, rhythmically accurate with the metronome. Accurate notes and pitches and articulations.	Few pitch and note inaccuracies, not together with metronome, but rhythmically consistent.	Many pitch and note inaccuracies, rhythmically inaccurate, not with metronome, many hesitations and restarts	Mostly inaccuracies in pitches and incorrect note sequence, many stops and restarts. Unable to recognize scale or pitches	Did no make attempt to play.

Trombone

Major Scales

Concert Gb Major Scale



Concert Db Major Scale



Concert Ab Major Scale



Concert Eb Flat Major



Concert Bb Major Scale



Concert F Major Scale



Concert C Major Scale



Concert G Major Scale



Concert D Major Scale



Concert A Major Scale



Trombone

Major Scales

Concert E Major Scale



Concert B Major Scale



Concert F Chromatic Scale



MAJOR SCALE TEST – Performance Assessment

FA: 9-12.2.1:

Perform a variety of musical elements with appropriate understanding, expression and style individually and in a group.

Performance Assessment:

Students will memorize all major scales and play along with the metronome at 100 beats per minute (100 bpm), quarter note equals one beat.

RUBRIC

4	3	2	1	0
ADVANCED	PROFICIENT	PARTIALLY PROFICIENT	NOVICE	
Scale played flawlessly, no hesitations, rhythmically accurate with the metronome. Accurate notes and pitches and articulations.	Few pitch and note inaccuracies, not together with metronome, but rhythmically consistent.	Many pitch and note inaccuracies, rhythmically inaccurate, not with metronome, many hesitations and restarts	Mostly inaccuracies in pitches and incorrect note sequence, many stops and restarts. Unable to recognize scale or pitches	Did no make attempt to play.

Baritone

Major Scales

Concert Gb Major Scale

Musical notation for the Concert Gb Major Scale in bass clef, common time. The scale is written in G-flat major (three flats: Bb, Eb, Ab). It consists of an ascending and a descending line, each starting with a quarter note G-flat and ending with a whole note G-flat. The notes are: Gb, Ab, Bb, C, D, Eb, F, Gb.

Concert Db Major Scale

Musical notation for the Concert Db Major Scale in bass clef, common time. The scale is written in D-flat major (two flats: Bb, Eb). It consists of an ascending and a descending line, each starting with a quarter note D-flat and ending with a whole note D-flat. The notes are: Db, Eb, F, G, Ab, Bb, C, Db.

Concert Ab Major Scale

Musical notation for the Concert Ab Major Scale in bass clef, common time. The scale is written in A-flat major (three flats: Bb, Eb, Ab). It consists of an ascending and a descending line, each starting with a quarter note A-flat and ending with a whole note A-flat. The notes are: Ab, Bb, C, D, Eb, F, G, Ab.

Concert Eb Flat Major

Musical notation for the Concert Eb Flat Major Scale in bass clef, common time. The scale is written in E-flat major (two flats: Bb, Eb). It consists of an ascending and a descending line, each starting with a quarter note E-flat and ending with a whole note E-flat. The notes are: Eb, F, G, Ab, Bb, C, D, Eb.

Concert Bb Major Scale

Musical notation for the Concert Bb Major Scale in bass clef, common time. The scale is written in B-flat major (two flats: Bb, Eb). It consists of an ascending and a descending line, each starting with a quarter note B-flat and ending with a whole note B-flat. The notes are: Bb, C, D, Eb, F, G, Ab, Bb.

Concert F Major Scale

Musical notation for the Concert F Major Scale in bass clef, common time. The scale is written in F major (one flat: Bb). It consists of an ascending and a descending line, each starting with a quarter note F and ending with a whole note F. The notes are: F, G, Ab, Bb, C, D, E, F.

Concert C Major Scale

Musical notation for the Concert C Major Scale in bass clef, common time. The scale is written in C major (no sharps or flats). It consists of an ascending and a descending line, each starting with a quarter note C and ending with a whole note C. The notes are: C, D, E, F, G, A, B, C.

Concert G Major Scale

Musical notation for the Concert G Major Scale in bass clef, common time. The scale is written in G major (one sharp: F#). It consists of an ascending and a descending line, each starting with a quarter note G and ending with a whole note G. The notes are: G, A, B, C, D, E, F#, G.

Concert D Major Scale

Musical notation for the Concert D Major Scale in bass clef, common time. The scale is written in D major (two sharps: F#, C#). It consists of an ascending and a descending line, each starting with a quarter note D and ending with a whole note D. The notes are: D, E, F#, G, A, B, C#, D.

Concert A Major Scale

Musical notation for the Concert A Major Scale in bass clef, common time. The scale is written in A major (three sharps: F#, C#, G#). It consists of an ascending and a descending line, each starting with a quarter note A and ending with a whole note A. The notes are: A, B, C#, D, E, F#, G#, A.

Baritone

Major Scales

Concert E Major Scale



Concert B Major Scale



Concert F Chromatic Scale



MAJOR SCALE TEST – Performance Assessment

FA: 9-12.2.1:

Perform a variety of musical elements with appropriate understanding, expression and style individually and in a group.

Performance Assessment:

Students will memorize all major scales and play along with the metronome at 100 beats per minute (100 bpm), quarter note equals one beat.

RUBRIC

4	3	2	1	0
ADVANCED	PROFICIENT	PARTIALLY PROFICIENT	NOVICE	
Scale played flawlessly, no hesitations, rhythmically accurate with the metronome. Accurate notes and pitches and articulations.	Few pitch and note inaccuracies, not together with metronome, but rhythmically consistent.	Many pitch and note inaccuracies, rhythmically inaccurate, not with metronome, many hesitations and restarts	Mostly inaccuracies in pitches and incorrect note sequence, many stops and restarts. Unable to recognize scale or pitches	Did no make attempt to play.

Tuba

Major Scales

Concert Gb Major Scale

Musical notation for the Concert Gb Major Scale in bass clef, common time. The scale consists of 12 notes: Gb, Ab, Bb, Cb, Db, Eb, Fb, Gb, Ab, Bb, Cb, Db. The notation includes slurs and a final double bar line.

Concert Db Major Scale

Musical notation for the Concert Db Major Scale in bass clef, common time. The scale consists of 12 notes: Db, Eb, Fb, Gb, Ab, Bb, Cb, Db, Eb, Fb, Gb, Ab. The notation includes slurs and a final double bar line.

Concert Ab Major Scale

Musical notation for the Concert Ab Major Scale in bass clef, common time. The scale consists of 12 notes: Ab, Bb, Cb, Db, Eb, Fb, Gb, Ab, Bb, Cb, Db, Eb. The notation includes slurs and a final double bar line.

Concert Eb Flat Major

Musical notation for the Concert Eb Flat Major Scale in bass clef, common time. The scale consists of 12 notes: Eb, Fb, Gb, Ab, Bb, Cb, Db, Eb, Fb, Gb, Ab, Bb. The notation includes slurs and a final double bar line.

Concert Bb Major Scale

Musical notation for the Concert Bb Major Scale in bass clef, common time. The scale consists of 12 notes: Bb, Cb, Db, Eb, Fb, Gb, Ab, Bb, Cb, Db, Eb, Fb. The notation includes slurs and a final double bar line.

Concert F Major Scale

Musical notation for the Concert F Major Scale in bass clef, common time. The scale consists of 12 notes: F, G, Ab, Bb, C, D, Eb, F, G, Ab, Bb, C. The notation includes slurs and a final double bar line.

Concert C Major Scale

Musical notation for the Concert C Major Scale in bass clef, common time. The scale consists of 12 notes: C, D, Eb, F, G, Ab, Bb, C, D, Eb, F, G. The notation includes slurs and a final double bar line.

Concert G Major Scale

Musical notation for the Concert G Major Scale in bass clef, common time. The scale consists of 12 notes: G, Ab, Bb, C, D, Eb, F, G, Ab, Bb, C, D. The notation includes slurs and a final double bar line.

Concert D Major Scale

Musical notation for the Concert D Major Scale in bass clef, common time. The scale consists of 12 notes: D, Eb, F, G, Ab, Bb, C, D, Eb, F, G, Ab. The notation includes slurs and a final double bar line.

Tuba

Major Scales

Concert A Major Scale



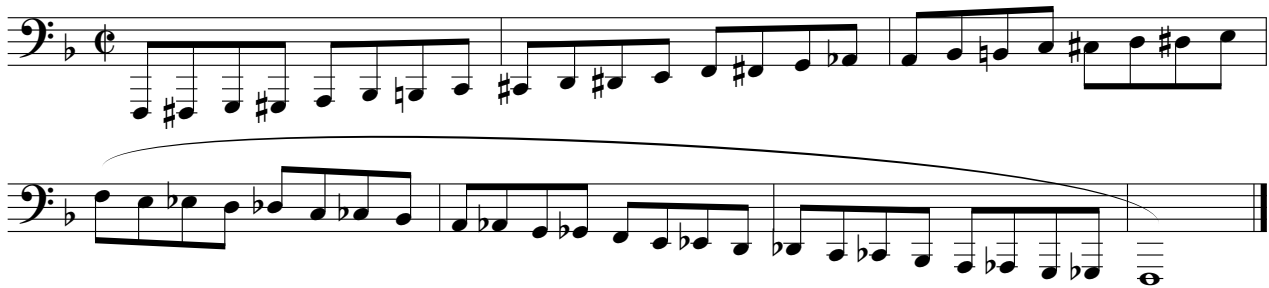
Concert E Major Scale



Concert B Major Scale



Concert F Chromatic Scale



MAJOR SCALE TEST – Performance Assessment

FA: 9-12.2.1:

Perform a variety of musical elements with appropriate understanding, expression and style individually and in a group.

Performance Assessment:

Students will memorize all major scales and play along with the metronome at 100 beats per minute (100 bpm), quarter note equals one beat.

RUBRIC

4	3	2	1	0
ADVANCED	PROFICIENT	PARTIALLY PROFICIENT	NOVICE	
Scale played flawlessly, no hesitations, rhythmically accurate with the metronome. Accurate notes and pitches and articulations.	Few pitch and note inaccuracies, not together with metronome, but rhythmically consistent.	Many pitch and note inaccuracies, rhythmically inaccurate, not with metronome, many hesitations and restarts	Mostly inaccuracies in pitches and incorrect note sequence, many stops and restarts. Unable to recognize scale or pitches	Did no make attempt to play.

Mallets

Major Scales

Concert Gb Major Scale



Concert Db Major Scale



Concert Ab Major Scale



Concert Eb Flat Major



Concert Bb Major Scale



Concert F Major Scale



Concert C Major Scale



Concert G Major Scale



Concert D Major Scale



Concert A Major Scale



Mallets

Major Scales

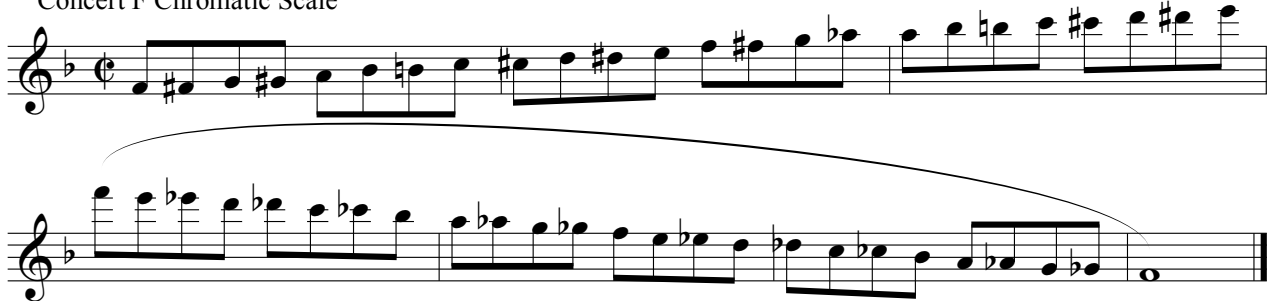
Concert E Major Scale



Concert B Major Scale



Concert F Chromatic Scale



MAJOR SCALE TEST – Performance Assessment

FA: 9-12.2.1:
Perform a variety of musical elements with appropriate understanding, expression and style individually and in a group.

Performance Assessment:
Students will memorize all major scales and play along with the metronome at 100 beats per minute (100 bpm), quarter note equals one beat.

RUBRIC

4	3	2	1	0
ADVANCED	PROFICIENT	PARTIALLY PROFICIENT	NOVICE	
Scale played flawlessly, no hesitations, rhythmically accurate with the metronome. Accurate notes and pitches and articulations.	Few pitch and note inaccuracies, not together with metronome, but rhythmically consistent.	Many pitch and note inaccuracies, rhythmically inaccurate, not with metronome, many hesitations and restarts	Mostly inaccuracies in pitches and incorrect note sequence, many stops and restarts. Unable to recognize scale or pitches	Did no make attempt to play.